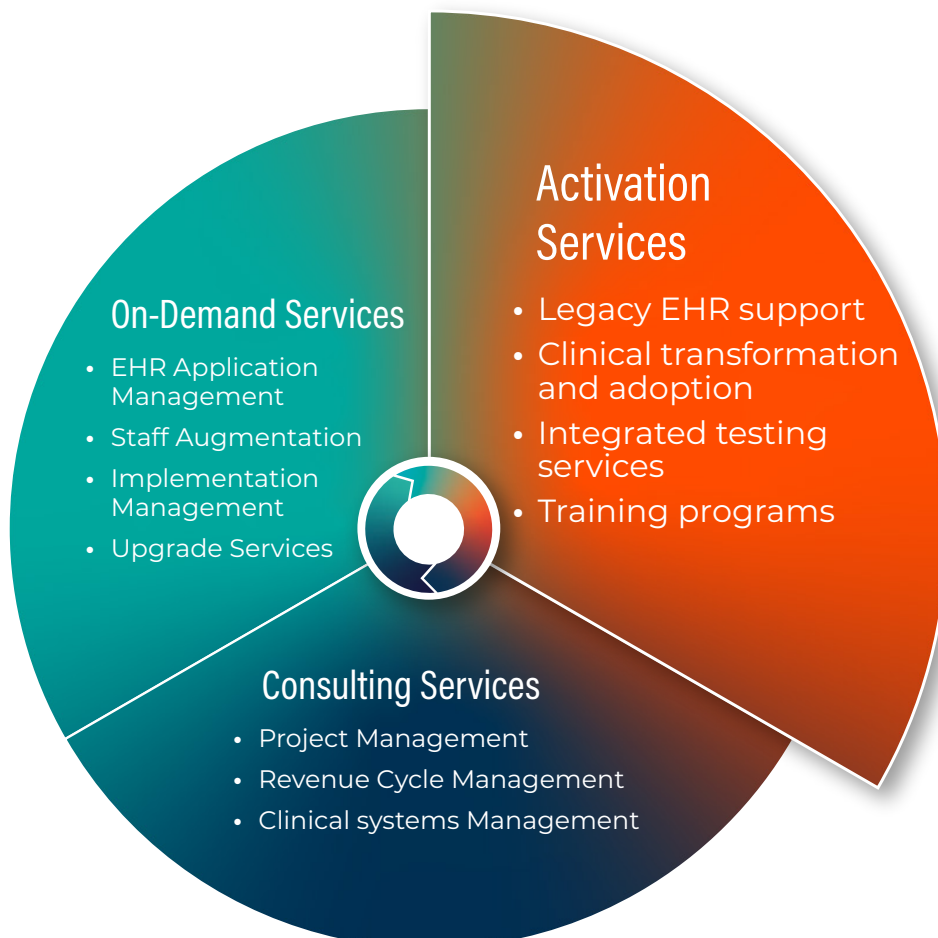


# Knowledge is power. DeliverHealth has training programs to help you manage your EHR.



Our team of directors, project managers, and trainers has years of experience developing and delivering end-to-end training programs designed to help users learn and apply new skillsets to their daily workflow.

Whether it's in a classroom, online, or in an interactive lab integrated with EHR performance solutions, we design, manage, and deliver training programs to keep you on track and empower your team.



---

## Key benefits

### Our people

- Trainers with 5+ years of experience, cross-trained in multiple applications

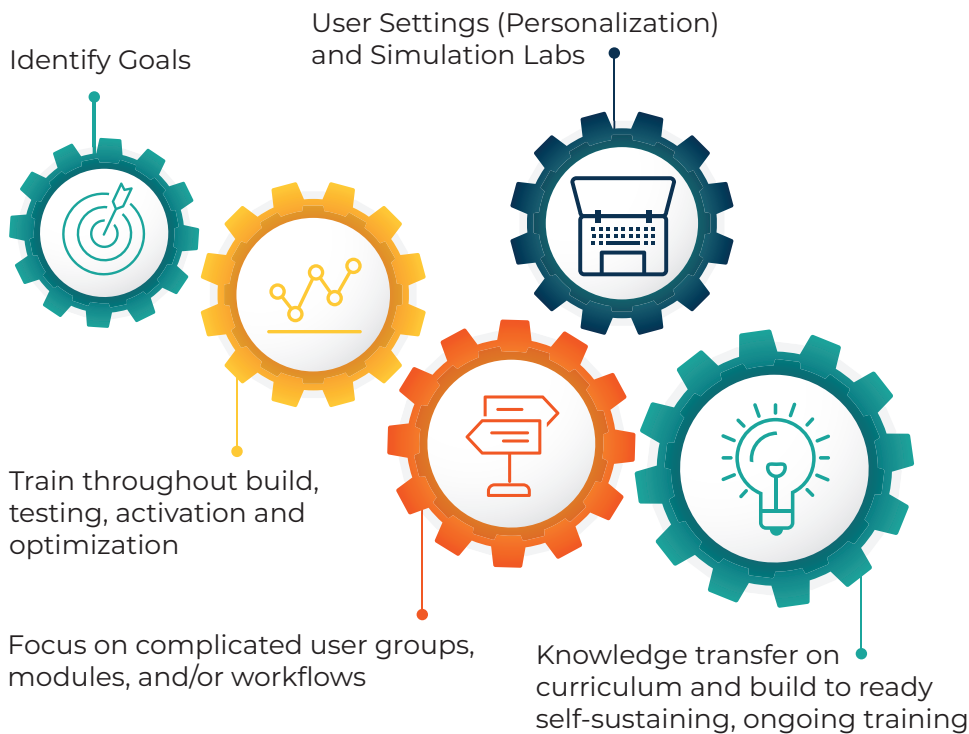
### Our approach

- Target specific skillsets and EHR applications used by each role to help users work quickly and with confidence
- Demonstrate DeliverHealth solutions with EHR tools for maximum efficiency

### Our analytics

- Create needs roadmap for activation support needs and success
  - Address performance gaps with resource adjustments, remediation plans, retraining
  - Provide stakeholder transparency with reports on adoption, revenue, staffing, budget, and more
-

# Training Methodology



## Technology integration

To make EHR interactions more efficient, our team incorporates voice recognition technology into training sessions to promote increased EHR and technology adoption. Our interactive lab team members have experience planning and delivering one-on-one training that boosts user confidence in their ability to work in the EHR.

## End-to-end training programs

Pre and post go-live sessions with curriculum development, class scheduling, and classroom design covering:

- Credentialed trainer programs
- Super user training
- eLearning development in multiple platforms
- Instructor-led classroom training
- Interactive classroom environments

## Targeted training

Address your greatest training needs, improve your performance, and prepare you to work quickly and efficiently in the EHR. We track your progress with efficiency reports, DeliverHealth solution data, and user assessments analytics.

## Provider personalization labs

You work one on one with our experts to:

- Personalize workspaces to work the way you work
- Configure notifications and order sets
- Integrate voice recognition technologies into a single workflow
- Use analytics to help identify and help struggling users

## Simulation labs

Working one on one with our experts, experience a real-world, hands-on, specialty-specific training environment to:

- Develop specialty-specific, scenario-based curriculum to proactively identify knowledge gaps
- Conduct one-on-one workflow review with physicians
- Use analytics to deliver detailed assessment of provider pain points, retraining recommendations, and list of adept users who can assist others
- Create collateral to address user issues

## About DeliverHealth

DeliverHealth simplifies EHR and revenue cycle complexities, so providers can spend more time caring for patients and less time on documentation and technology. With clients and operations in five countries, decades of health information management, and hundreds of EHR 'Go Live' deployment experiences, DeliverHealth offers solutions across multiple specialties in hospitals, health systems, and physician groups. For more information, please visit [DeliverHealth.com](https://www.deliverhealth.com).

